



Located in the very heart of Kharkov's busy downtown, Ave Plaza inevitably became a new commercial hub of the city, attracting visitors with a variety of shops and restaurants, as well as with its striking appearance. Although the building has a relatively small footprint, it proves to be highly efficient due to well thought-out circulation, which provides access to numerous facilities on each of the four commercial floors. The new building fills a gap in the historic tissue along the red line of the street, providing smooth transition between two existing scales. In order to achieve maximum efficiency of the retail centre, the volume of the building is pierced by an ellipsoid atrium with a peninsular tower in the middle. The tower is occupied by a variety of restaurants, encouraging visitors to climb higher to the upper floors. The peninsular tower inside the atrium creates a lively atmosphere, without spoiling the sightlines and the entire visual perception of the interior space. Occupying one fourth of the total area, the atrium represents an allusion to a city quarter. It is topped by a roof garden on the level of the fourth floor.

AVE PLAZA

林荫广场购物中心

LOCATION: Kharkov, Ukraine

AREA: 23,400m²

Architect

Oleg Drozdov, Vyacheslav Zhemir, Irina Goydenko

Firm

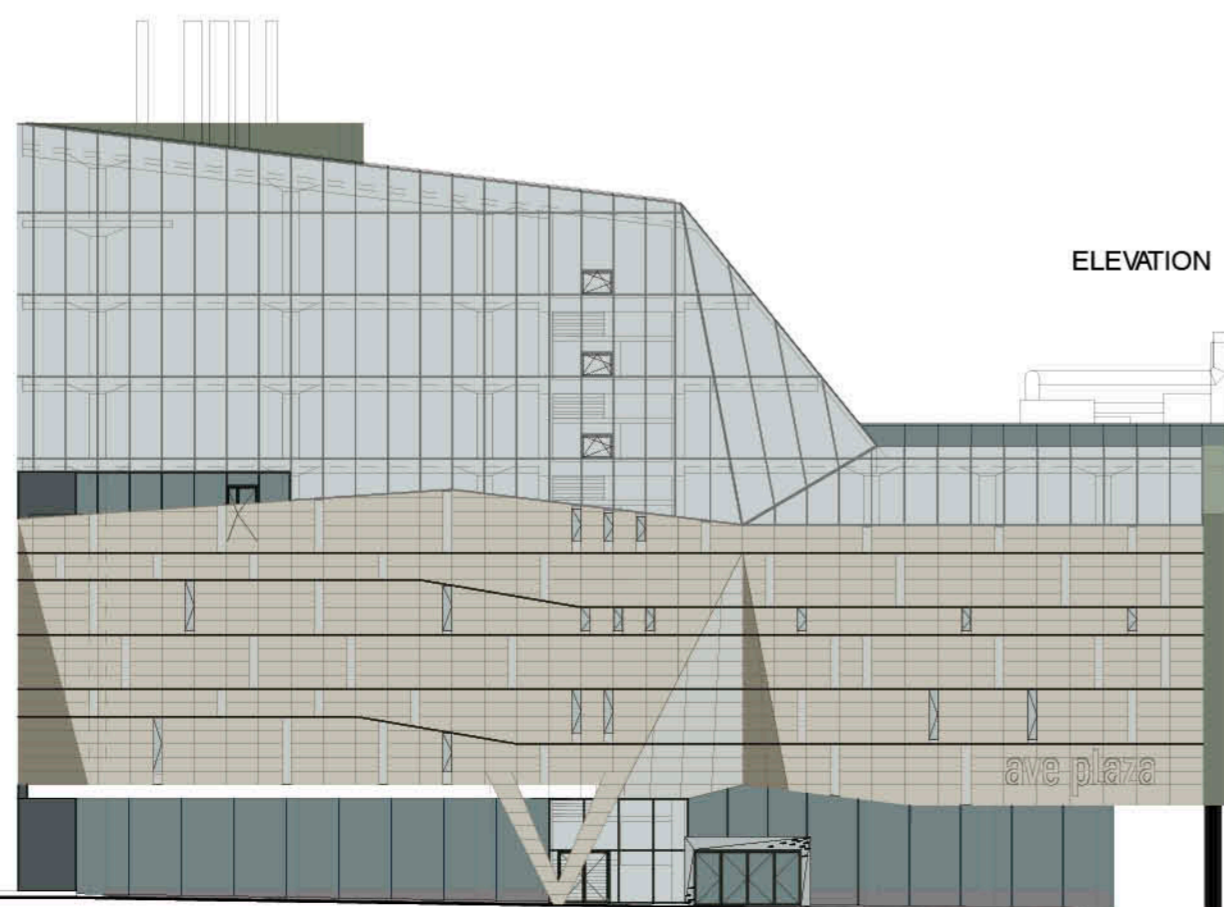
Drozdov & Partners

Client

"Avec and Co."

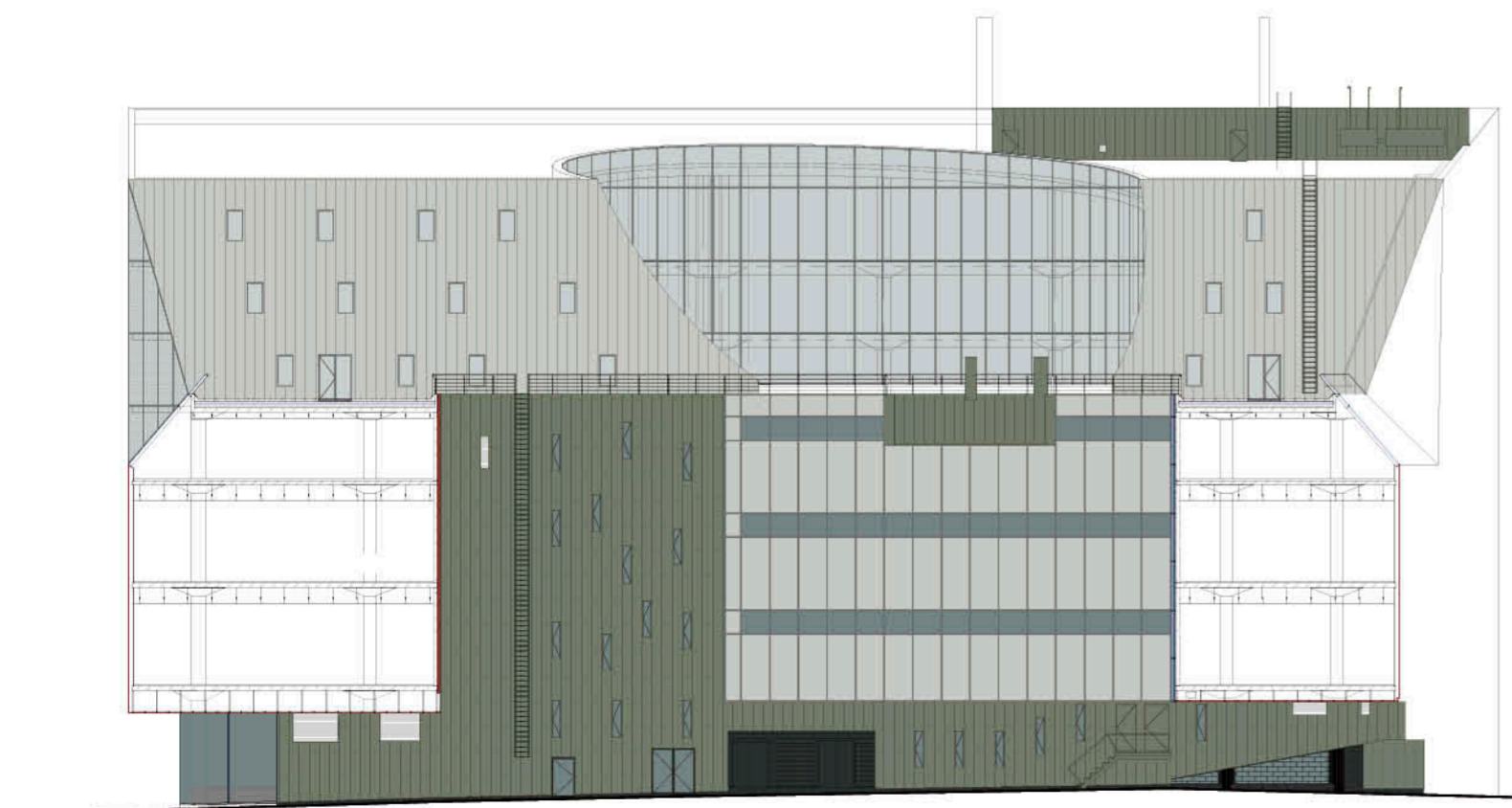
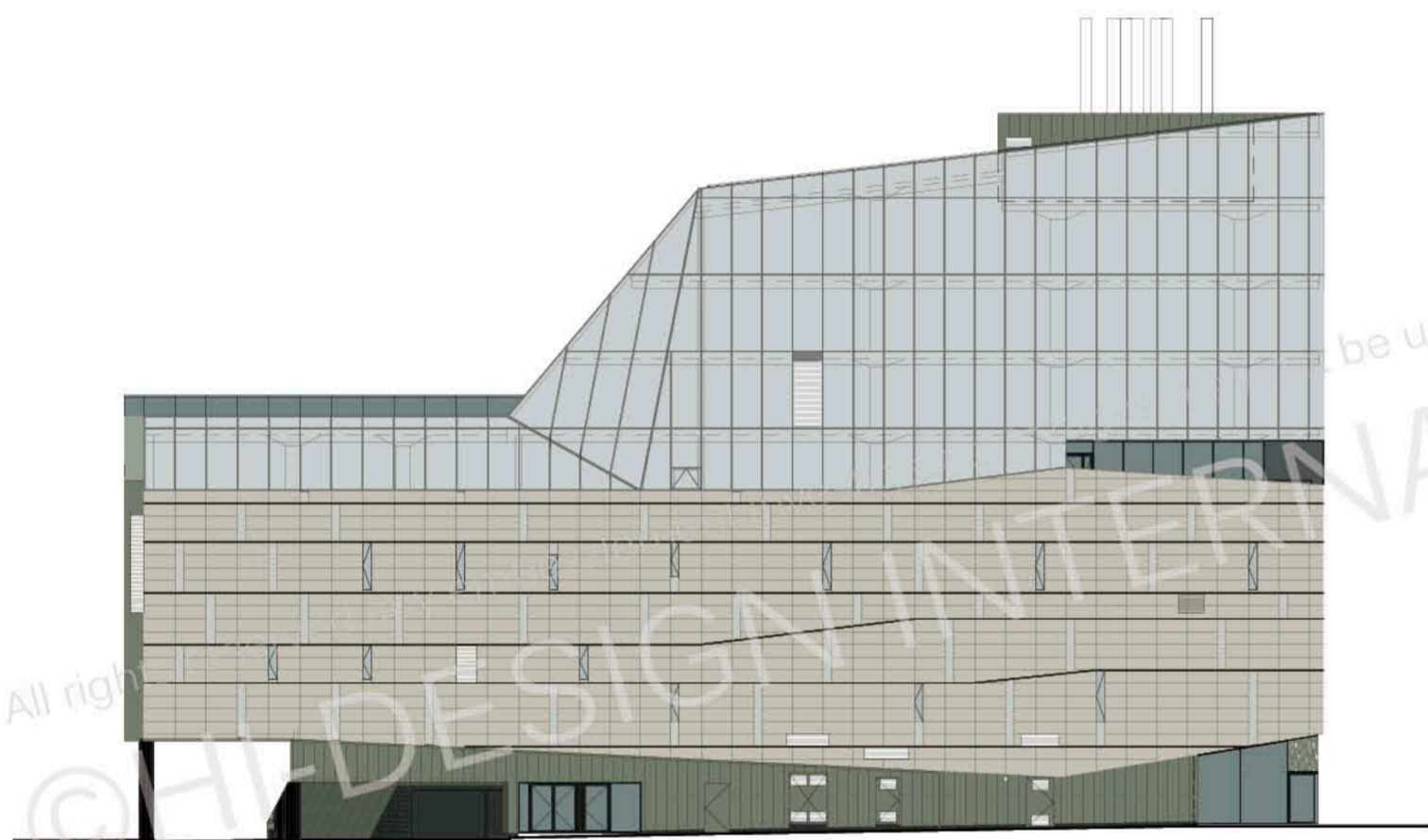
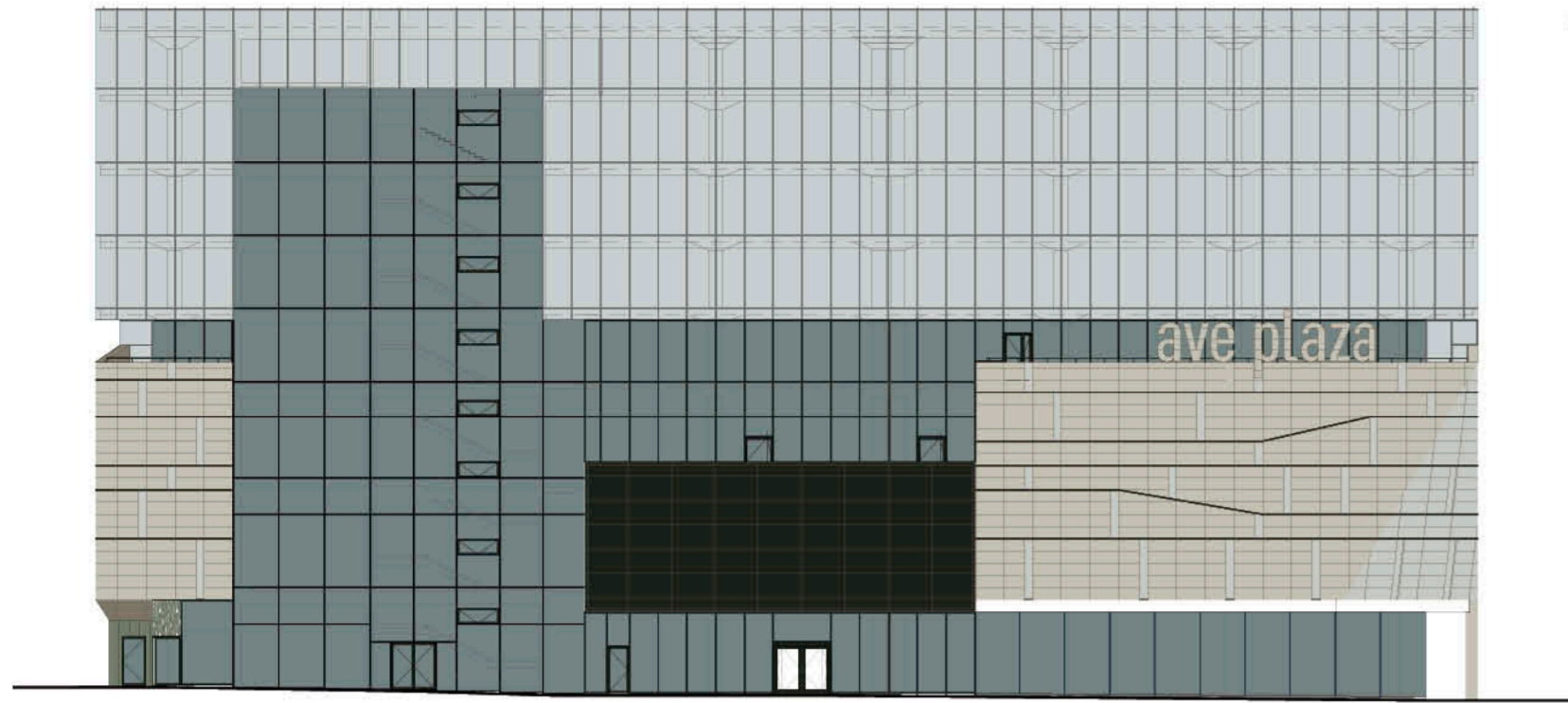
Photographer

Andrey Avdeenko



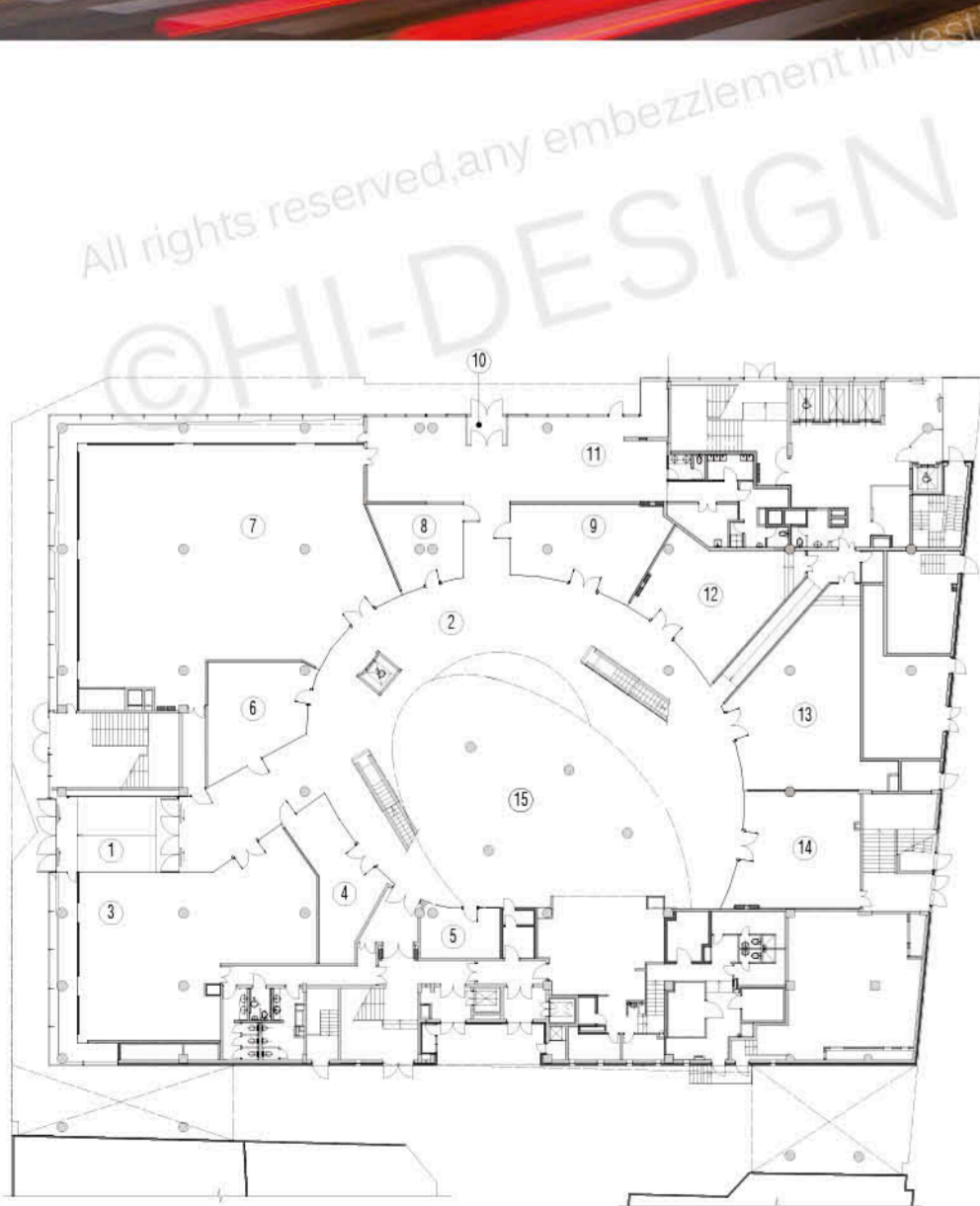
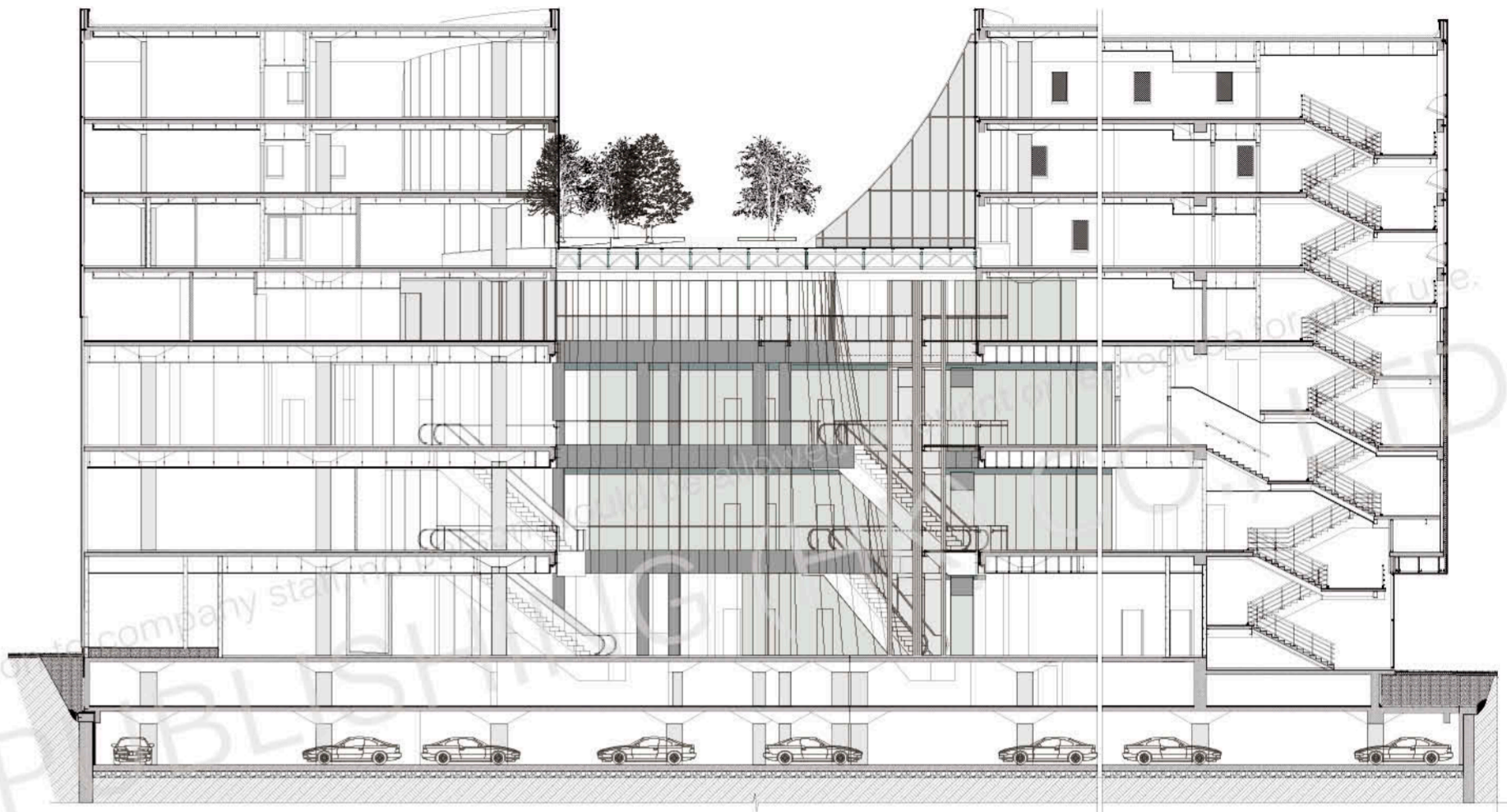
ELEVATION

ELEVATIONS





SECTION



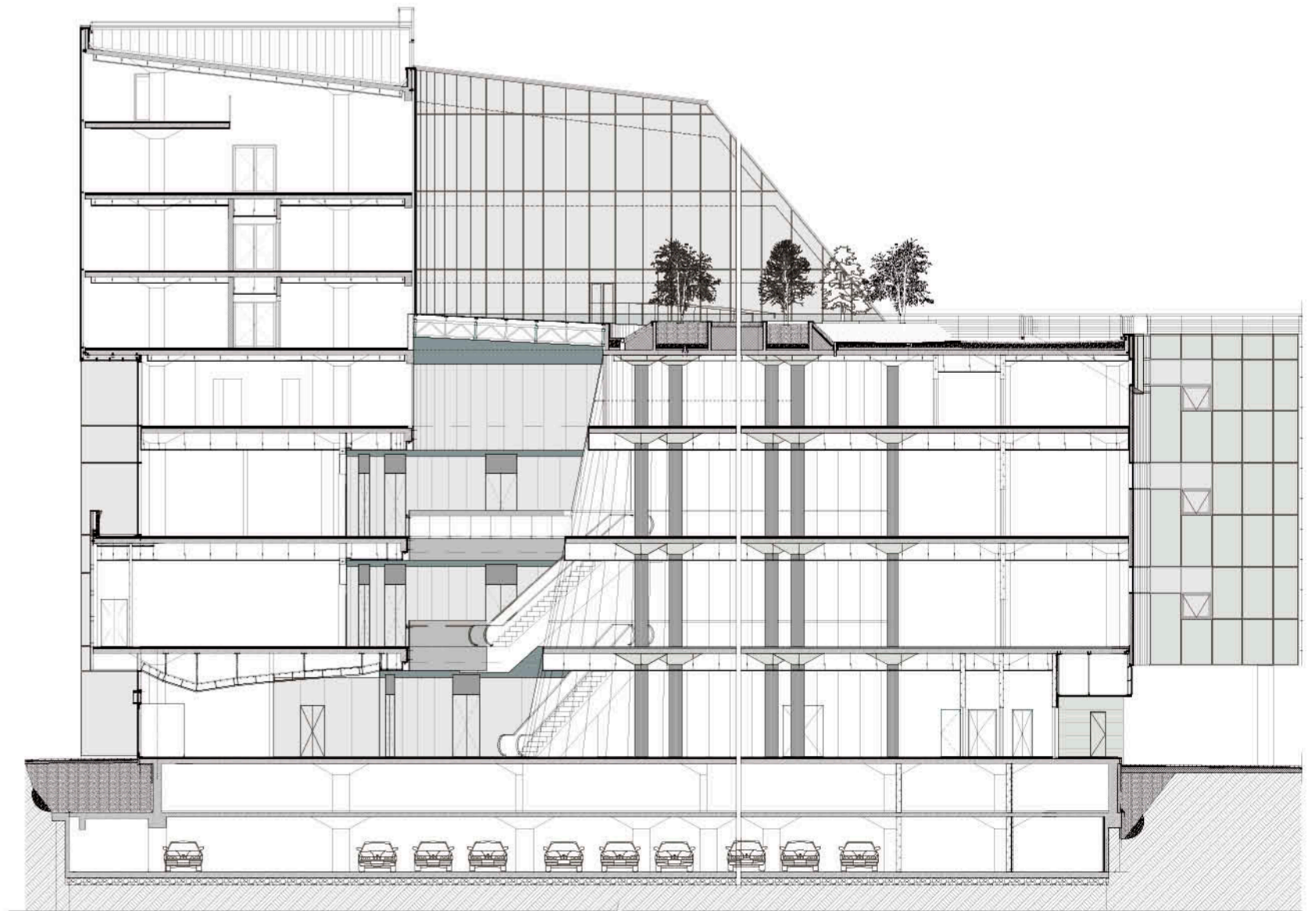
ground floor

- 1 entrance
- 2 lobby
- 3 retail space 1
- 4 retail space 2
- 5 retail space 3
- 6 retail space 4
- 7 retail space 5
- 8 retail space 6
- 9 retail space 7
- 10 entrance
- 11 cafe
- 12 retail space 8
- 13 retail space 9
- 14 retail space 10
- 15 cafe

坐落于哈尔科夫繁忙的市中心，林荫广场购物中心不可避免的成为了一个新的城市商业活动中心，以种类繁多的商铺和餐厅吸引顾客，当然还有它醒目的外观。虽然建筑的占地面积相对较小，使用效率却很高的，这源于它深思熟虑的流线设计，使顾客到达四层商贸楼层的每一层都很方便。

新的建筑填补了沿街道内红线的历史建筑和现代建筑间的缺口，提供了两个现存尺度间的平滑过渡。为了使零售中心吸引更多的顾客，建筑体量开辟了一个椭圆形的中庭，中庭中央有一个半岛形的塔楼。塔楼内有多种多样的餐厅，吸引顾客去登上更高的楼层。

中庭内半岛形的塔楼营造出一个活跃的氛围，避免了视线的遮挡和对室内空间整体视觉感知的破坏。占据总面积的 1/4，中庭代表了对城市一角的暗示。中庭在第四层被一个屋顶花园覆盖。



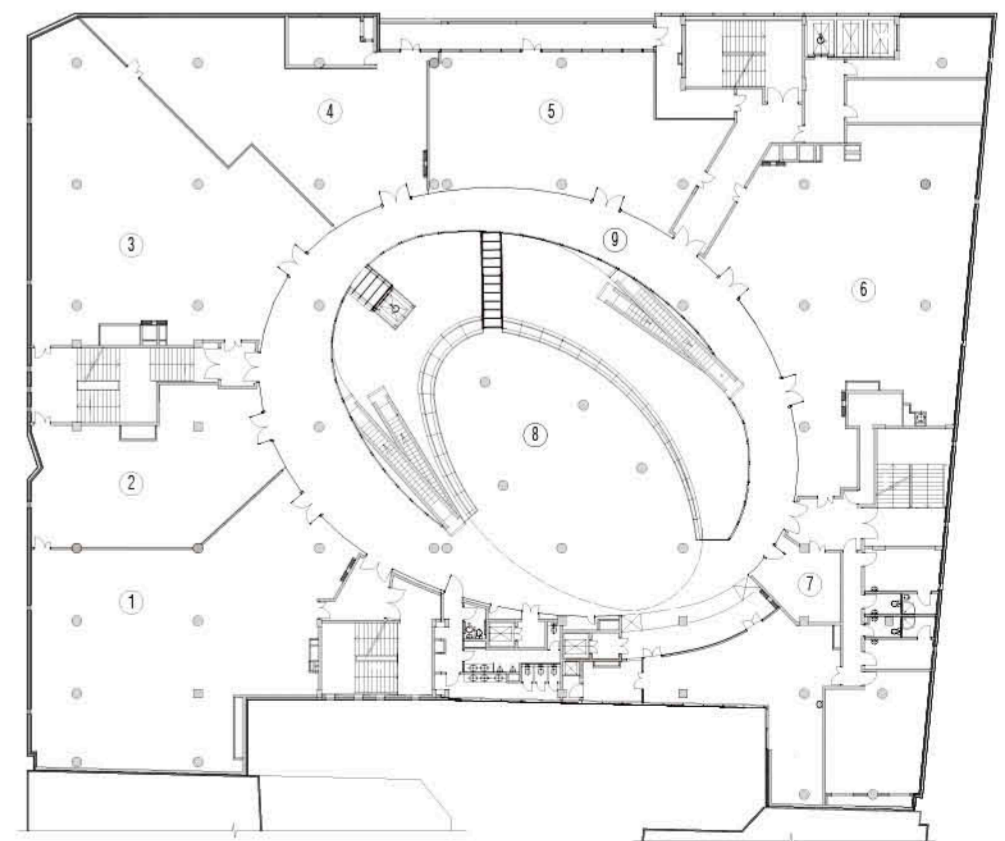
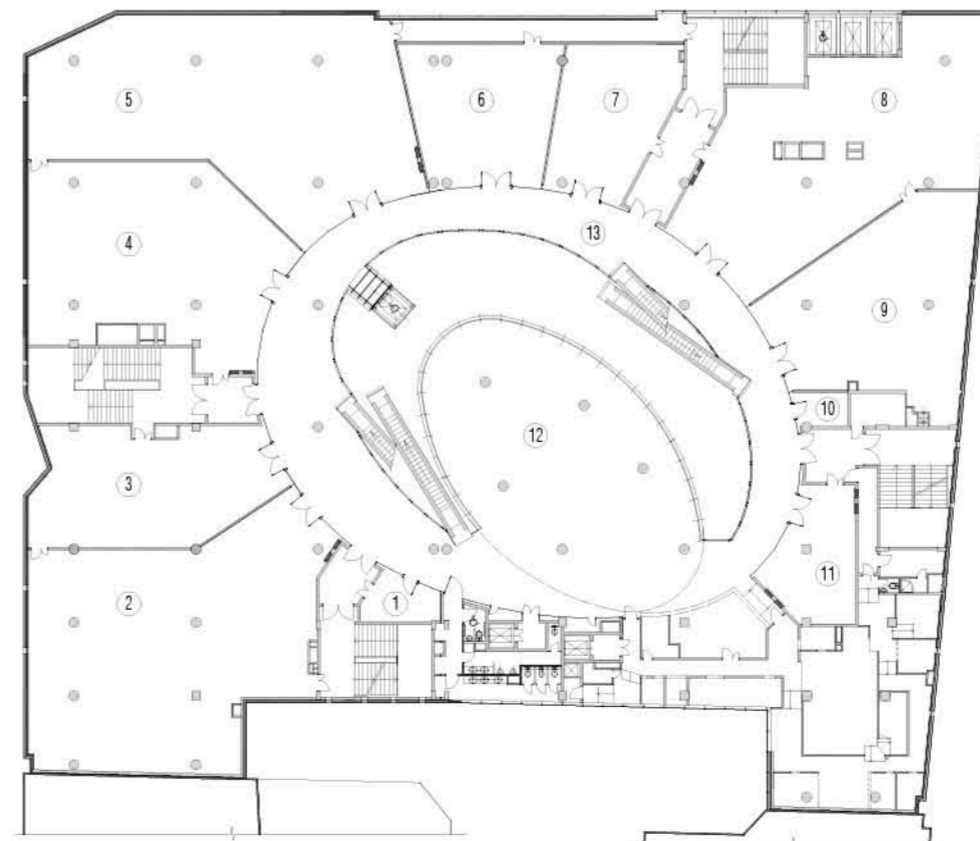


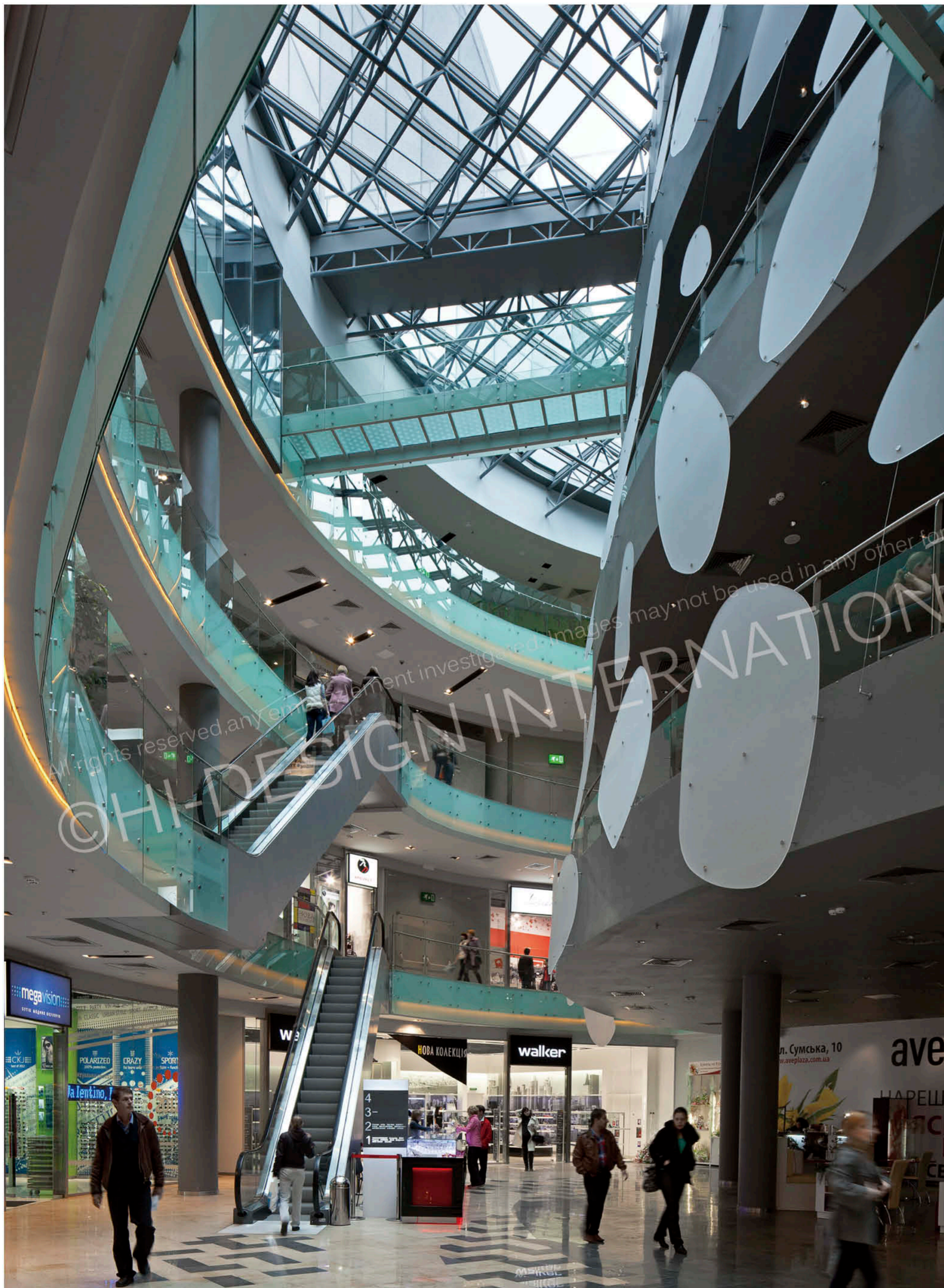
the first floor

- 1 retail space 1
- 2 retail space 2
- 3 retail space 3
- 4 retail space 4
- 5 retail space 5
- 6 retail space 6
- 7 retail space 7
- 8 retail space 8
- 9 retail space 9
- 10 retail space 10
- 11 retail space 11
- 12 cafe
- 13 lobby

the second floor

- 1 retail space 1
- 2 retail space 2
- 3 retail space 3
- 4 retail space 4
- 5 retail space 5
- 6 retail space 6
- 7 retail space 7
- 8 cafe
- 9 lobby





the third floor

- 1 billiard hall
- 2 fitness club
- 3 retail space 1
- 4 lounge
- 5 exhibition hall
- 6 bar
- 7 lobby
- 8 lobby

the fourth floor

- 1 lobby
- 2 office 1
- 3 office 2
- 4 office 3
- 5 office 4
- 6 office 5
- 7 utility room
- 8 meeting room
- 9 CEO office
- 10 office 6
- 11 office 7

