



31 Darwin Str., office 1  
Kharkov 61002, Ukraine  
P: (+380) 57-758-76-90  
www.drozdov-partners.com



© Andrey Avdeenko



© Igor Lyalyuk

0872

Despite the client's apprehensions, the loose border between the interior and exterior on the intersection of two busy pedestrian flows leads to total visitor satisfaction.

0873

The dialogue between the horizontal "bridges" and the vertical lines of trees introduces a new spatial perception of the park.

0870

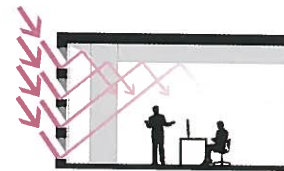
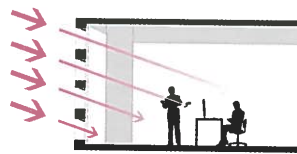
The new building facilitates the client's business activity and philanthropic programs by means of a new concert venue on the open street front terraces and a public courtyard for hosting sculpture exhibitions.



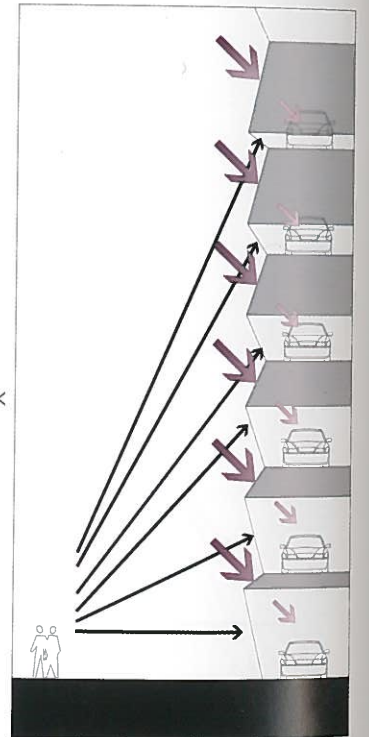
>>

0871

Energy efficiency principles can become a key architectural feature in the building. This was the case for this office center with an auto supermarket.

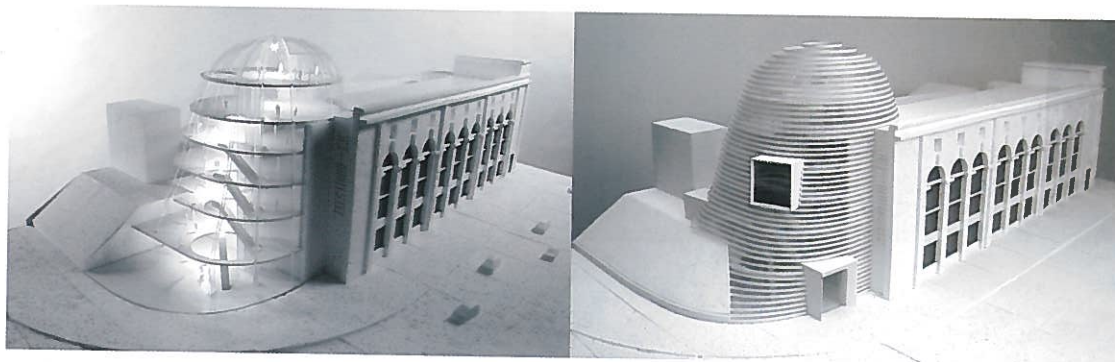


>>



0874 ▶

Using landscape dialogue rather than architectural language can lead to surprising results.



◀0875

The visual proximity of the sea is enhanced by the two mirror-like swimming pools—inside and outside the house—that are interconnected via a lock gate in summer.



◀0876

Each story of the house is marked with a narrow strip of glazing that provides 360-degree openness of the interior space. After a bit of practice, you can tell the time by the angle of the sun's rays penetrating into the house.



0877 ▶

The combination of stone terraces and volumes unifies the garden and house in a single structure, accentuating the dynamic terrain.



0878 ▲

The internal space of the house is organized around a patio in the winter garden, with all the lines of vision between different zones passing through it.



>>



◀0879

The tower-volume implanted within the atrium forms the core of the building and culminates in a roof garden. It plays a number of roles: enriching the interior space of the trading floors and creating a piece of nature to marvel at from the offices on the upper floors.